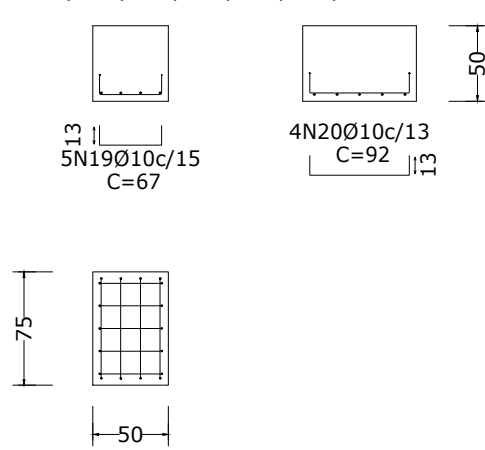
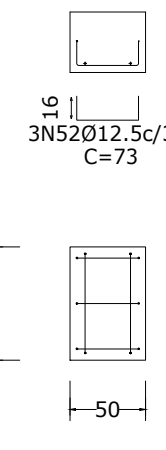


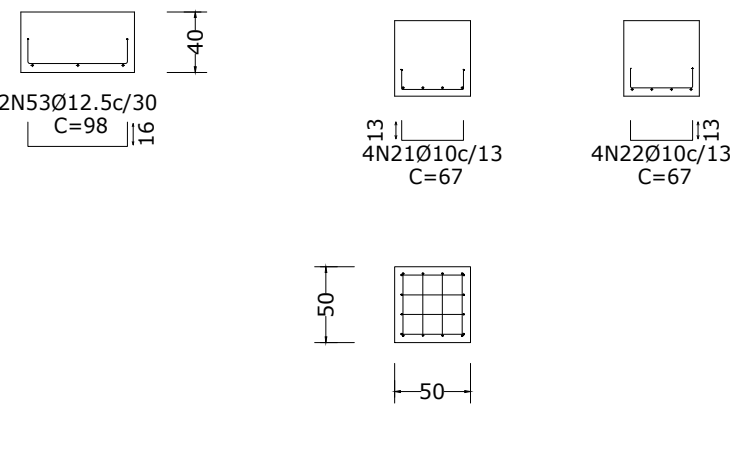
P1, P2, P3, P4, P5, P9, P10 e P11



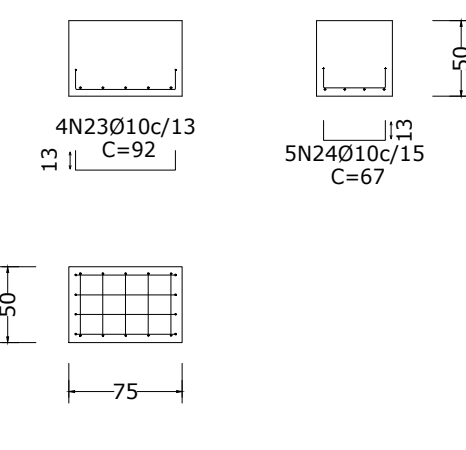
P6, P7 e P8



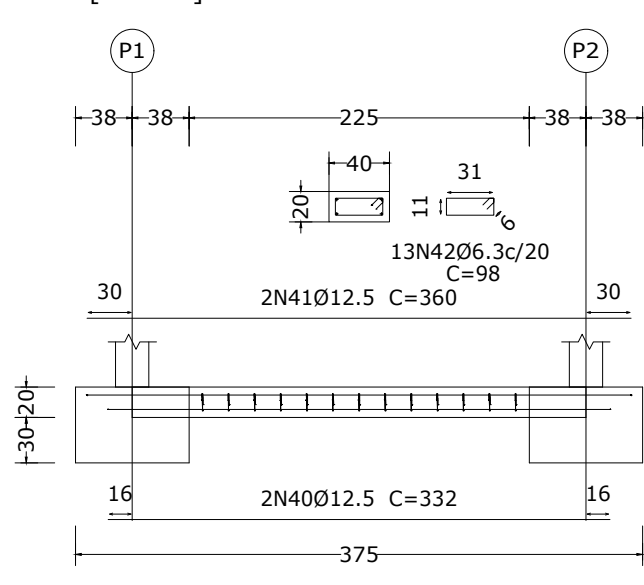
P12, P15 e P16



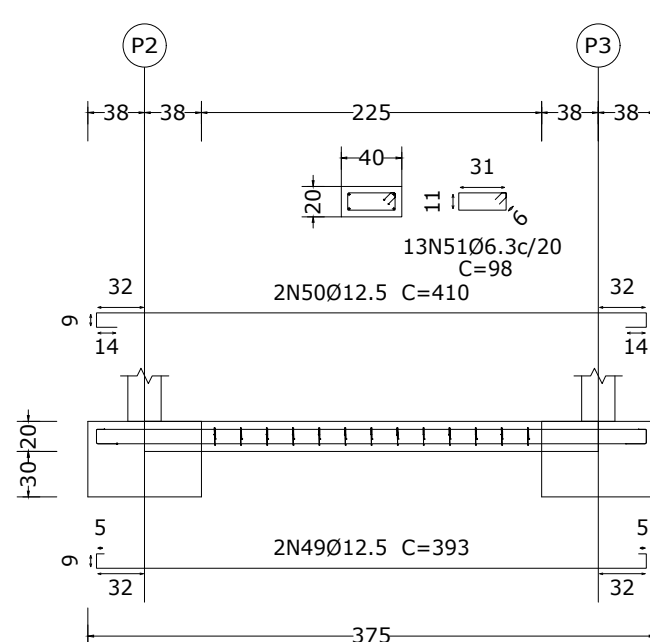
P13, P14, P17 e P18



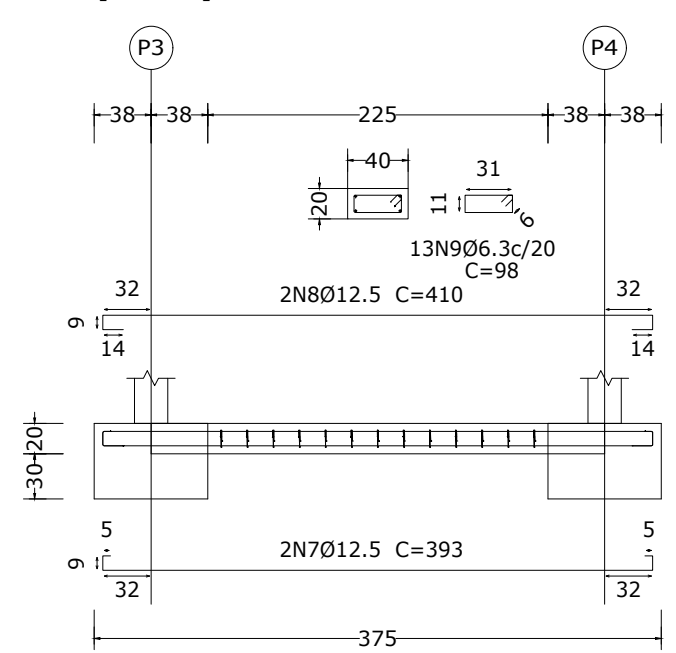
40x20 [P1 - P2]



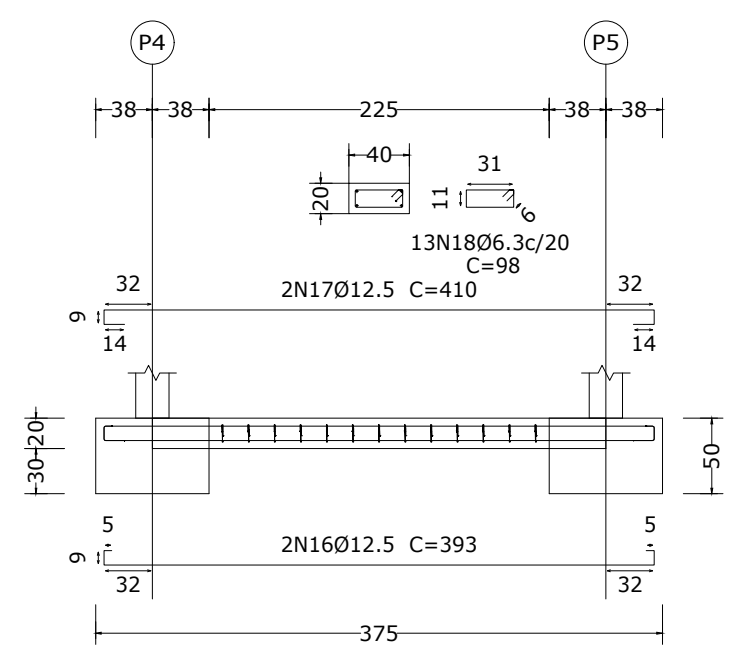
40x20 [P2 - P3]



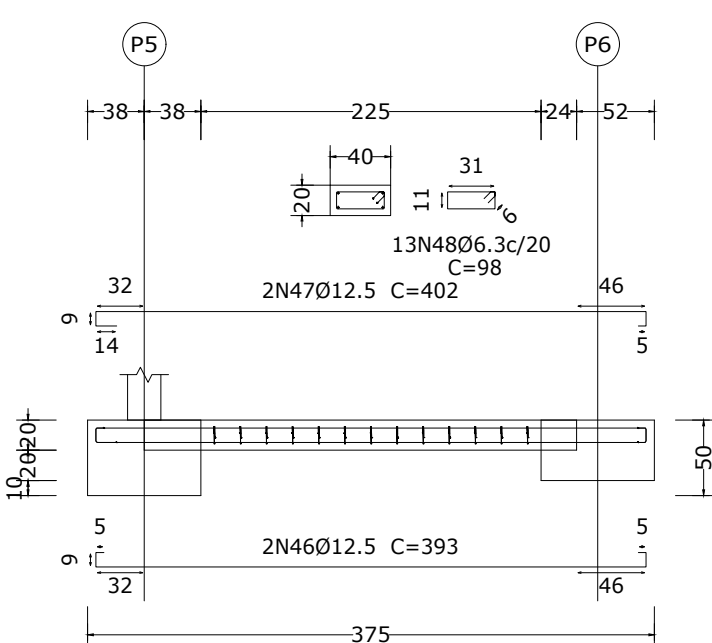
40x20 [P3 - P4]



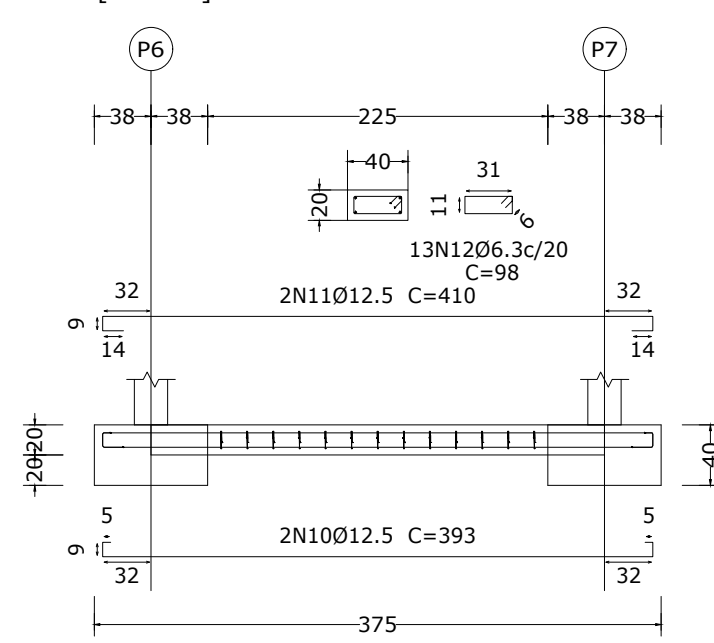
40x20 [P4 - P5]



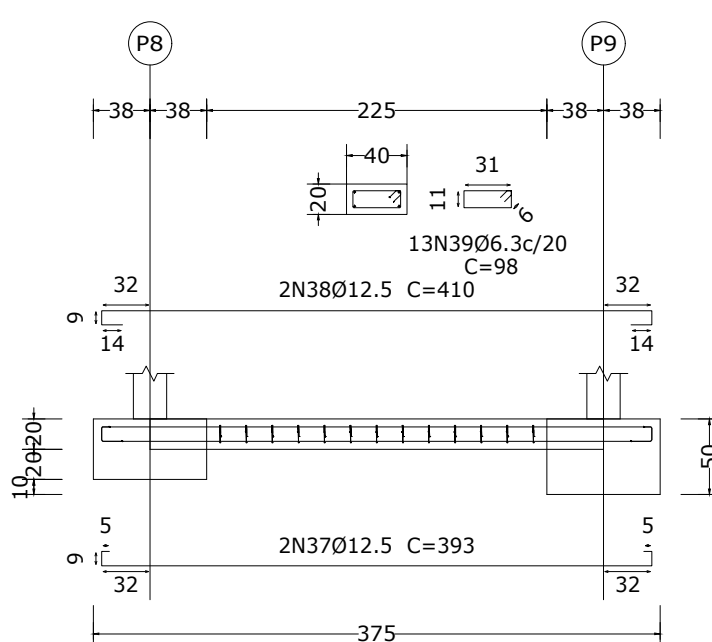
40x20 [P5 - P6]



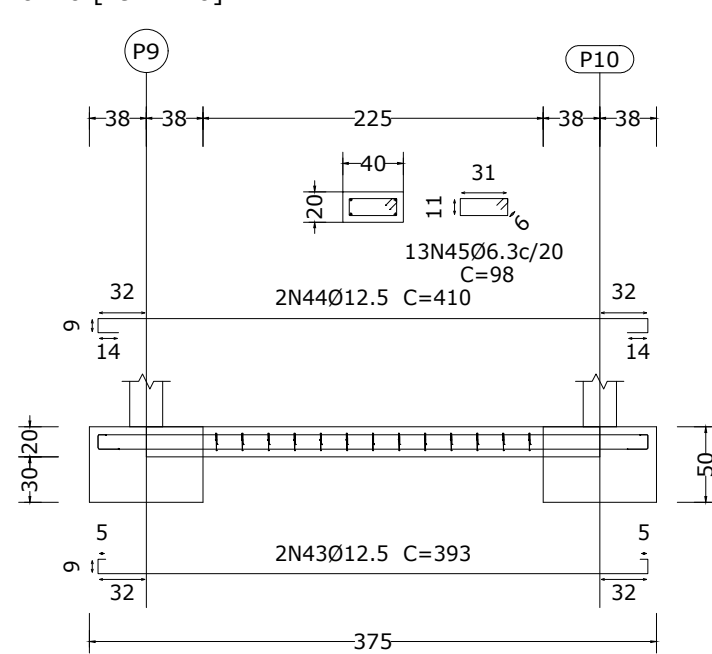
40x20 [P6 - P7]



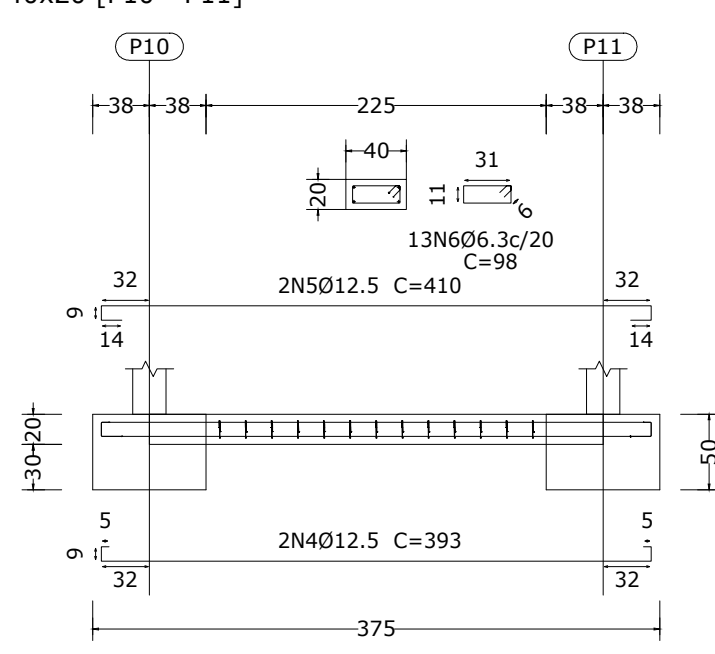
40x20 [P8 - P9]



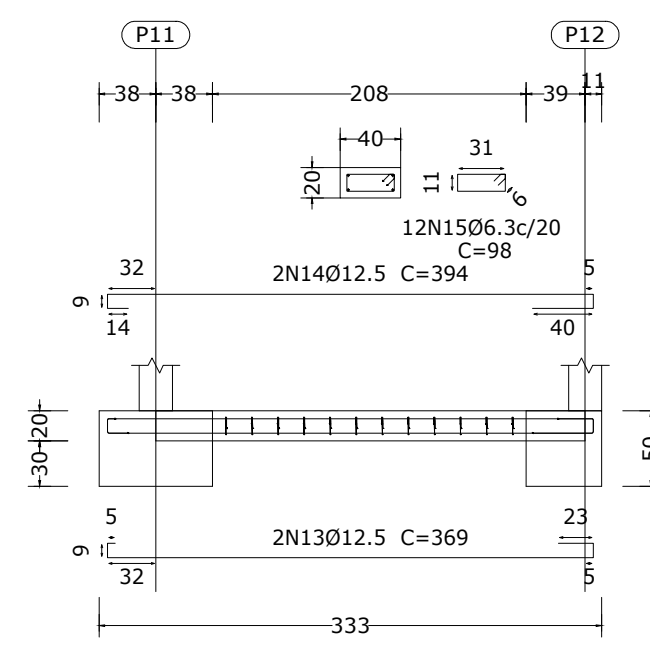
40x20 [P9 - P10]



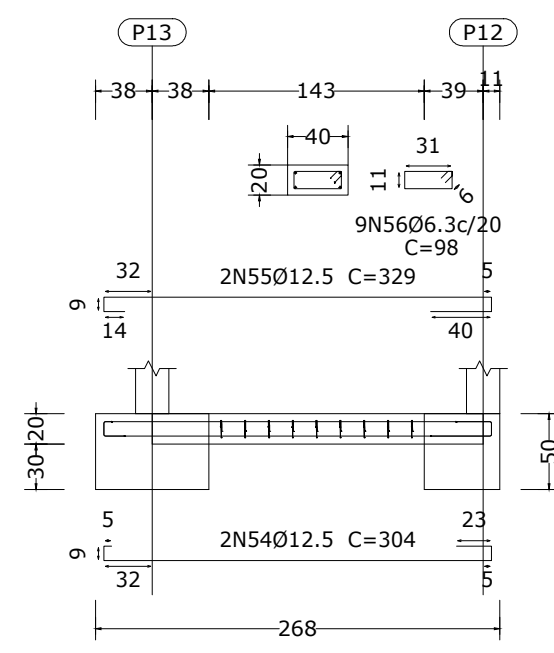
40x20 [P10 - P11]



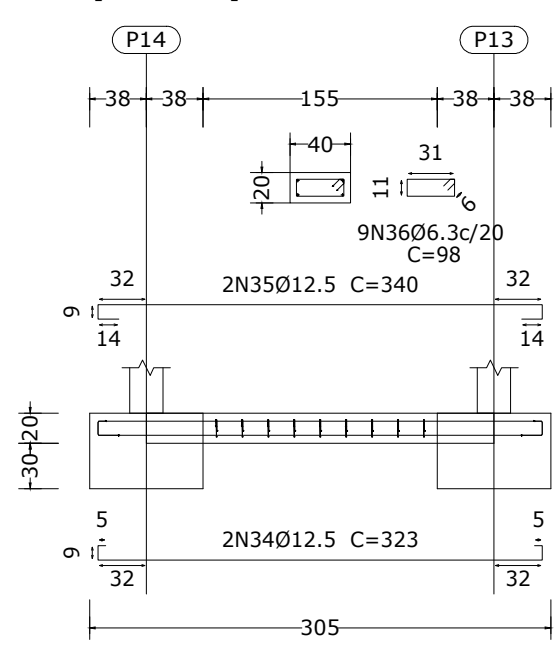
40x20 [P11 - P12]



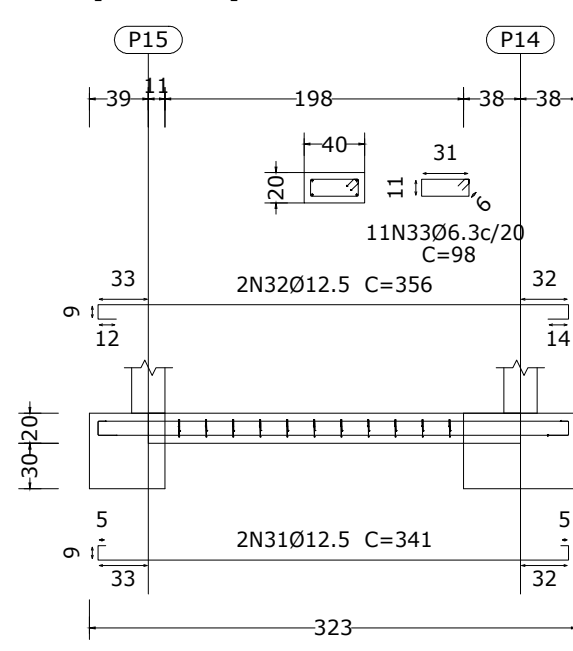
40x20 [P13 - P12]



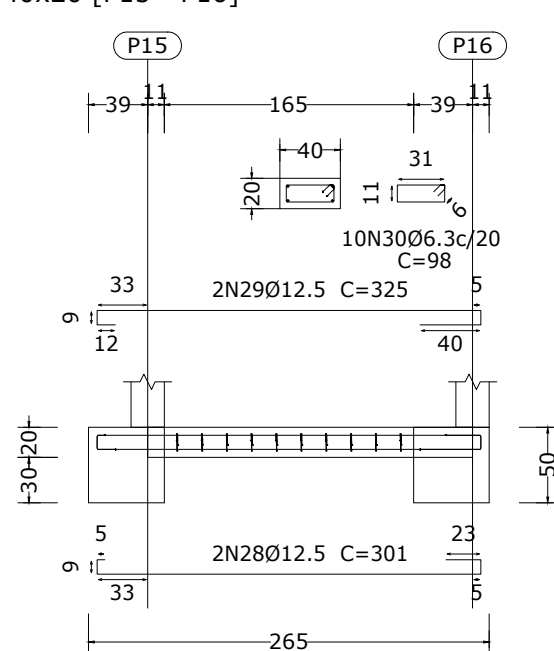
40x20 [P14 - P13]



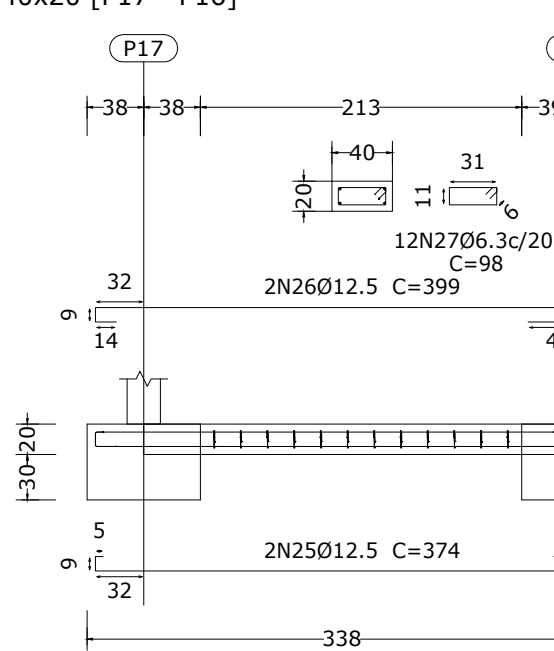
40x20 [P15 - P14]



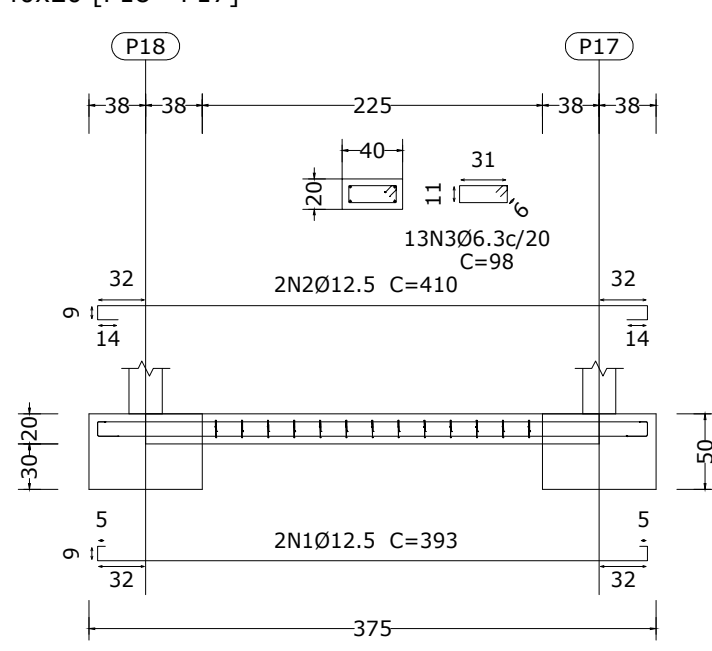
40x20 [P15 - P16]



40x20 [P17 - P16]



40x20 [P18 - P17]

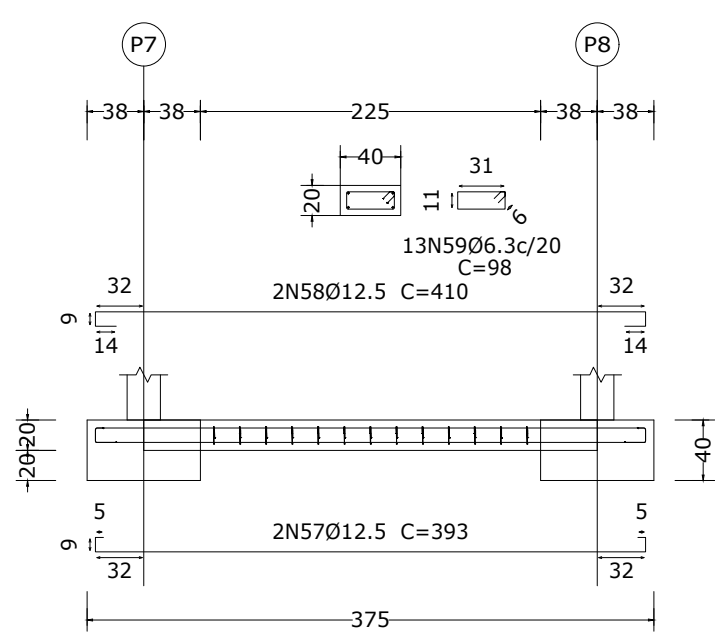


Elemento	Pos.	Diam.	Q.	Dob. (cm)	Reta (cm)	Dob. (cm)	Comp. (cm)	Total (cm)	CA-50 (kg)	CA-60 (kg)
40x20 [P18 - P17]	1	Ø12.5	2	5	383	5	393	786	7.6	
	2	Ø12.5	2	14	382	14	410	820	7.9	
	3	Ø6.3	13		98		98	1274	3.1	
Total+10%:									20.5	
40x20 [P10 - P11]	4	Ø12.5	2	5	383	5	393	786	7.6	
	5	Ø12.5	2	14	382	14	410	820	7.9	
	6	Ø6.3	13		98		98	1274	3.1	
Total+10%:									20.5	
40x20 [P3 - P4]	7	Ø12.5	2	5	383	5	393	786	7.6	
	8	Ø12.5	2	14	382	14	410	820	7.9	
	9	Ø6.3	13		98		98	1274	3.1	
Total+10%:									20.5	
40x20 [P6 - P7]	10	Ø12.5	2	5	383	5	393	786	7.6	
	11	Ø12.5	2	14	382	14	410	820	7.9	
	12	Ø6.3	13		98		98	1274	3.1	
Total+10%:									20.5	
40x20 [P11 - P12]	13	Ø12.5	2	5	341	23	369	738	7.1	
	14	Ø12.5	2	14	340	40	394	788	7.6	
	15	Ø6.3	12		98		98	1176	2.9	
Total+10%:									19.4	
40x20 [P4 - P5]	16	Ø12.5	2	5	383	5	393	786	7.6	
	17	Ø12.5	2	14	382	14	410	820	7.9	
	18	Ø6.3	13		98		98	1274	3.1	
Total+10%:									20.5	

00 FUNDAÇÃO  
Detalhamento fundação  
Concreto: C20, em geral  
Escala: 1:100

Resumo Aço 00 FUNDAÇÃO Detalhamento fundação CA-50	Comp. total (m)	Peso+10% (kg)	Total
Ø6.3	201.9	54	
Ø10	100.4	68	
Ø12.5	269.8	286	408

40x20 [P7 - P8]



Elemento	Pos.	Diam.	Q.	Dob. Reta (cm)	Dob. (cm)	Comp. (cm)	Total (cm)	CA-50 (kg)	CA-60 (kg)
P1=P2=P3=P4=P5 P9=P10=P11	19	Ø10	5	13	41	13	67	335	2.1
	20	Ø10	4	13	66	13	92	368	2.3
	Total+10%:							4.8	
							(x8):	38.4	
P12=P15=P16	21	Ø10	4	13	41	13	67	268	1.7
	22	Ø10	4	13	41	13	67	268	1.7
	Total+10%:							3.7	
							(x3):	11.1	
P13=P14=P17=P18	23	Ø10	4	13	66	13	92	368	2.3
	24	Ø10	5	13	41	13	67	335	2.1
	Total+10%:							4.8	
							(x4):	19.2	
40x20 [P17 - P16]	25	Ø12.5	2	5	346	23	374	748	7.2
	26	Ø12.5	2	14	345	40	399	798	7.7
	27	Ø6.3	12		98		98	1176	2.9
Total+10%:							19.6		
40x20 [P15 - P16]	28	Ø12.5	2	5	273	23	301	602	5.8
	29	Ø12.5	2	12	273	40	325	650	6.3
	30	Ø6.3	10		98		98	980	2.4
Total+10%:							16.0		
40x20 [P15 - P14]	31	Ø12.5	2	5	331	5	341	682	6.6
	32	Ø12.5	2	12	330	14	356	712	6.9
	33	Ø6.3	11		98		98	1078	2.6
Total+10%:							17.7		
40x20 [P14 - P13]	34	Ø12.5	2	5	313	5	323	646	6.2
	35	Ø12.5	2	14	312	14	340	680	6.5
	36	Ø6.3	9		98		98	882	2.2
Total+10%:							16.4		
40x20 [P8 - P9]	37	Ø12.5	2	5	383	5	393	786	7.6
	38	Ø12.5	2	14	382	14	410	820	7.9
	39	Ø6.3	13		98		98	1274	3.1
Total+10%:							20.5		
40x20 [P1 - P2]	40	Ø12.5	2		332		332	664	6.4
	41	Ø12.5	2		360		360	720	6.9
	42	Ø6.3	13		98		98	1274	3.1
Total+10%:							18.0		
40x20 [P9 - P10]	43	Ø12.5	2	5	383	5	393	786	7.6
	44	Ø12.5	2	14	382	14	410	820	7.9
	45	Ø6.3	13		98		98	1274	3.1
Total+10%:							20.5		
40x20 [P5 - P6]	46	Ø12.5	2	5	383	5	393	786	7.6
	47	Ø12.5	2	14	383	5	402	804	7.7
	48	Ø6.3	13		98		98	1274	3.1
Total+10%:							20.2		
40x20 [P2 - P3]	49	Ø12.5	2	5	383	5	393	786	7.6
	50	Ø12.5	2	14	382	14	410	820	7.9
	51	Ø6.3	13		98		98	1274	3.1
Total+10%:							20.5		
P6=P7=P8	52	Ø12.5	3	16	41	16	73	219	1.9
	53	Ø12.5	2	16	66	16	98	196	1.9
	Total+10%:							4.4	
							(x3):	13.2	
40x20 [P13 - P12]	54	Ø12.5	2	5	276	23	304	608	5.9
	55	Ø12.5	2	14	275	40	329	658	6.3
	56	Ø6.3	9		98		98	882	2.2
Total+10%:							15.8		
40x20 [P7 - P8]	57	Ø12.5	2	5	383	5	393	786	7.6
	58	Ø12.5	2	14	382	14	410	820	7.9
	59	Ø6.3	13		98		98	1274	3.1
Total+10%:							20.5		
							Ø6.3:	54.1	0.0
							Ø10:	68.7	
							Ø12.5:	286.7	
							Total:	409.5	0.0

USAR 2 CORDÕES DE 6,3MM ENTRE CADA FIADA DE BLOCOS  
IMPLANTAR DRENO DE 100Ø RENTE À FACE INTERNA DOS BLOCOS

OBRA

UBS JARDIM DO SOL

PROJETO

MURO DE CONTENÇÃO 01 | FUNDAÇÃO

LOCAL

RUA AVELINO MÔNACO ESQ RUA ITAMAR ANTONIO VARGAS  
JARDIM DO SOL | CAMPO BOM/RS

PROPRIETÁRIO

MUNICÍPIO DE CAMPO BOM

RESPONSÁVEL  
TÉCNICO

WILLIAM MATEUS MULLER | ENG. CIVIL | CREA RS 212.795

DESENHO

Mateus

DATA

Fevereiro/2025

ESCALA

ÁREA

389,78m²

PRANCHA

E.01

Direitos autorais reservados